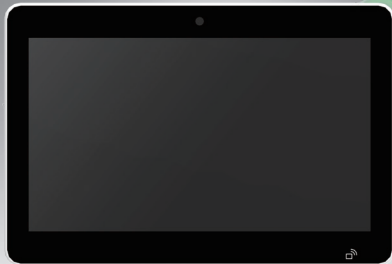


HIT-312

Innovative 11.6" Healthcare Information Terminal



DeviceOn/Service

Features

- Innovative and ultra-slim design for healthcare and hospitality applications
- All-in-one computer with Rockchip RK3399
- IP65 rated front panel, IPX3 for Whole system
- Supports M.2 2230 Wi-Fi / BT modules
- Supports RFID/NFC, Web Camera, LED indicator and POE
- USB Type-C interface as the future with I/O expansion modules
- Supports 100x100mm VESA mount
- Medical certification
- Support Android operating system



Introduction

The HIT-312 is a 11.6-inch all-in-one medical infotainment terminal. It utilizes the Rockchip RK3399 processor and supports the Android operating system. The thin and light ID design meets customers' needs for easy installation, fast wiring and low power consumption. Creative design, I/O expansion modules are available to meet a variety of user scenarios and are available in all-in-one or separate kits. Expand customer applications from hospital applications to healthcare applications. Adopt the USB Type C technology trend and centralize USB Type C ports in the main system for a truly slim design. Expand I/O, functionality, and battery backup modules with multiple configurations for flexible installations.

Specifications

Hardware	CPU	Rockchip RK3399
	Memory	DDR4 x 1, 4GB
	Primary Storage (eMMC)	32G eMMC (max 128G by customization)
	Camera	2MP CMOS
Display	Size	11.6" W TFT LED
	Max Resolution	1920 x 1080
	Luminance	300 cd/m2
	Contrast Ratio	800:1
Touchscreen	Type	Projected Capacitive
Power Button	Power Button	1
I/O Ports	USB 2.0	2
	DC-in w/ lock	1
Audio	Speaker	2 Watt x 2
	Internal Microphone	1 (bottom side)
Network	LAN	RJ45 (10/100/1000 Mbit) x 1 (Option: PoE)
	Bluetooth	BT 5.2 (Default Module)
	WLAN	802.11 a/b/g/n/ac/ax (Default Module)
Software	OS	Android 10, 14(TBD), Linux (by project base)
Mechanical	Mounting	VESA 100 x 100 mm
	Dimensions (W x H x D)	294.4 x 198.3 x 24.2(27.0) mm
	Weight	Net Weight (w/o adapter): 2.2lb, 1.2kg Weight: 2kg
Optional	Camera	Optional (Embedded module) 2M Module
	RFID/NFC	Optional (Embedded module)
	PoE	Optional (Embedded module)
	Back-up Battery	Optional (Embedded module) Bat 4600 mAh by T-PN
Power Supply	AC/DC Adapter	Medical Grade
	Output Voltage	Medical: Type C 65W in
Environment	Operating Temperature	0 ~ 35 °C
	IP Rating	IP65 rated front panel IPX3 for whole system (IO down-side)
	Vibration	1G
	Shock	10G Peak Acceleration (11ms duration)
	EMC & Safety Cert.	CE, FCC, CCC, IEC/EN 60601-1/-1-2, UL 60601-1, MDR

DeviceOn/iService Specifications

DeviceOn/iService Remote Device Management	Operating System	Android
	Common Controls (Reboot, Shutdown)	✓
	Remote desktop	✓(VNC)
	Device-Specific Controls (Audio, Backlight)	✓*
	Connection Status	✓
	Hardware Status	✓*
	Hard Disk Status	
	Batch Operation Support	✓
	OTA Storage Management	Local blob
	OTA Software Updates	✓
	Software Watchlist	✓
	Software Start/Stop	✓
	Kiosk Mode	✓*
	Peripherals Watchlist	✓*

*Dependant on device model

Note: DeviceOn/iService software must be downloaded from the Advantech website at <https://www.advantech.com/search/?q=DeviceOn%2FiService&st=support&ssl=Utility>

HIT-312 Series Exterior view

Unit: mm



Ordering Information

Part Number	Description
HIT-312-13F21D-CM	11.6", RK3399, 32G/4G, CAM, WIFI/BT, RFID, Android
HIT-312-13F21B-CM	11.6", RK3399, 32G/4G, Bare, Android
HIT-312-23F21D-CM	11.6", RK3399, 32G/4G, CAM, WIFI/BT, RFID, A, POE

Power Cord

Region	Part Number (DC Model)
USA (Thailand, Philippines)	1702002600
Europe (Indonesia)	1702002605
UK (Singapore, Malaysia)	1700018704
Japan (PSE)	1700000237

Fully- Integrated I/O



- A. Option: LAN (Option: PoE)
- B. Type-C(USB 3.0).
- C. Micro USB(USB 2.0)
- D. USB 2.0 x2
- E. Power buttons

Peripherals for HIT-312 Series

Part Number	Description
ARES-12250-L101000	Wall mount
ARES-2424X-S170200	Table stand
ARES-2425X-S271000	
ARES-7621C	
ARES-7321I	Long reach arm
ARES-7221A	

DeviceOn/iService

Unified Remote Device Management Software



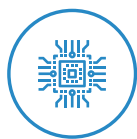
Features

- Supports Advantech devices equipped with Windows, Android, and Linux OS
- Flexible device, location, user, and permissions management
- Enables remote monitoring and control of hardware, software, and peripherals
- Supports over-the-air (OTA) firmware and software updates
- Ensures quick, easy, and secure device onboarding
- RESTful APIs for third-party system integration

Introduction

Advantech's DeviceOn/iService is a next-generation unified device management solution based on the WISE-DeviceOn platform. Designed to enable centralized monitoring and remote management, DeviceOn/iService supports Advantech devices equipped with Windows, Linux, or Android operating systems. The software also supports the management of applications and integrated peripherals, such as a barcode scanner, card reader, camera, and printer. Users can remotely access and control connected devices, take screenshots, rollout OTA upgrades, and use remote desktop capabilities for troubleshooting from any location at any time. Moreover, DeviceOn/iService supports batch operations to facilitate the management of multiple devices simultaneously for easy and convenient device configuration and deployment.

Total Management



Devices & Hardware

- Windows, Linux, Android
- Hardware, storage, battery



Software & Peripherals

- Software monitoring & access
- Screens, USB devices, printers



Open for Expansion

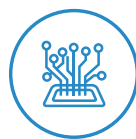
- Peripheral integration
- Open APIs for integration

Remote Access



Real-Time Monitoring

- Connection/hardware status
- Software/peripheral status
- Failure notifications



Remote Controls

- Power controls
- Audio, backlight controls
- Software controls



Troubleshooting

- Screenshots
- Remote desktop support

Operational Efficiency



OTA updates

- System/software updates
- File repository management
- App store



Batch Controls

- 1-to-many batch reboot, etc.
- Time-saving tasks



Setup Booster

- Software/peripheral watchlist
- Roles, rule templates

Note: Some functions may vary according to the product

System Architecture

